



EDMI Software

Web-Based Energy Information Reporting



Clariti™



SOFTWARE SERIES

PRODUCT INFORMATION

Clariti is a web-based energy information and reporting tool which provides users with a view of when, where and how much energy is being used at any time.

Clariti provides critical insight into customer energy usage through a range of actionable reports (both delivered and on-line), usage notifications, and interactive performance charts.

Clariti is meticulously designed for ease of use and flexibility, to utilise information for better management of energy usage.



KEY FEATURES



PROVEN
RELIABILITY



INTEGRATION
WITH EDM1 METERS



EASY TO USE
GRAPHICAL INTERFACE



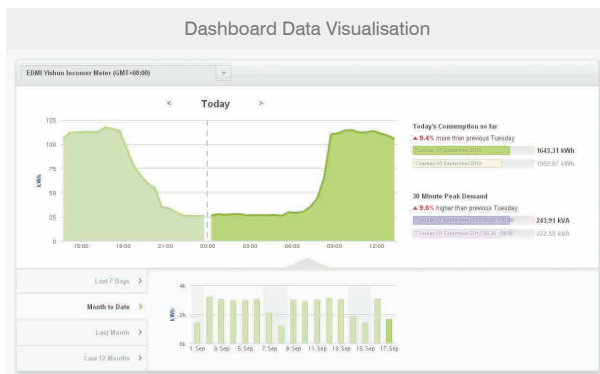
QUICK & EASY
TO DEPLOY

Web-Based Energy Information Reporting

SPECIFICATIONS

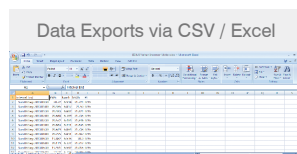
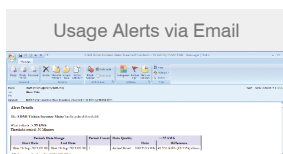
Benefits

- Leverage existing time interval data to provide reporting over electricity, gas, water, temperature (or any time interval based data)
- Implement energy management strategies, monitor and evaluate the effectiveness of energy saving measures
- Evaluate and compare energy performance across large aggregated multi site organisations
- Compare different energy tariffs applied to the same site
- Meet and actively maintain environmental goals and objectives
- Present a value-added service to users and give your organisation a point of difference from your competitors



Features

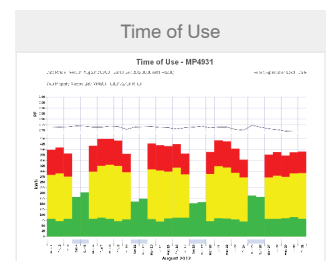
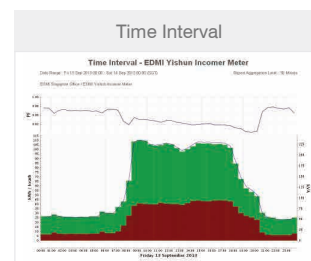
- Compare current energy use against historical usage
- Compare energy data across multiple sites
- View and compare aggregate usage across multiple sites
- Highlight variances or problem areas and monitor individual sites for operational efficiency
- Analyse Time of Use and Fixed Rate energy charges
- Generate alerts when energy usage exceeds a pre-set threshold
- Interactive dashboard view of energy performance
- A wide range of configurable interactive reports that users can easily adjust and tailor, to suit specific reporting needs
- Schedule reports to be emailed directly to users



Report Options

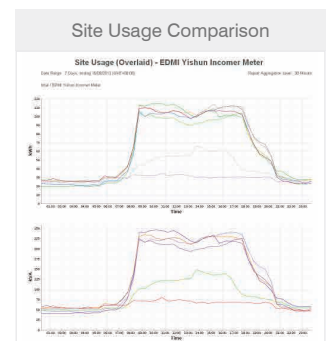
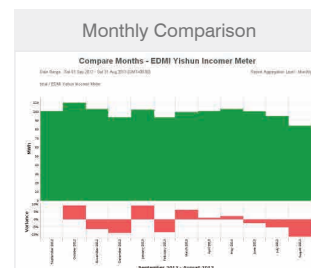
View Usage over Time:

- Time Interval
- Peak Demand
- Time of use
- Tariff
- CO₂ Emissions
- Voltage



Compare:

- Days/Weeks/Months
- Like Days/Months
- Site Usage (Overlaid)



Data and Exports:

- Tabular Data
- CSV/Excel Export

Implementation options

- Can be re-branded to suit a corporate identity
- Subscription based service with no capital outlay/infrastructure costs, OR
- Deploy directly onsite